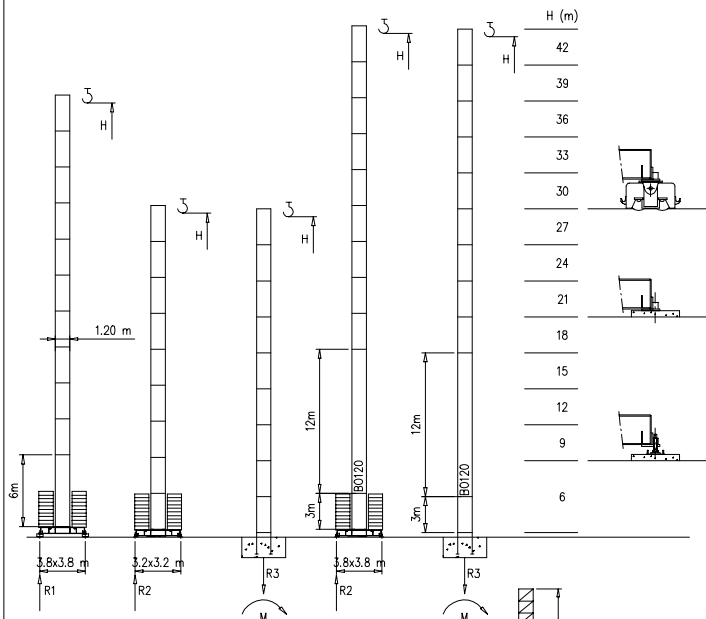


Torre/Reazioni - Masts/Reactions - Mat/Réactions - Masto/Eckdrücke - Mástli/Reacciones - Tramo/Reacções

S1210

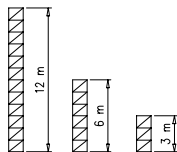
39.6 m → 50 m



H=37-42 m	
R1	55 t
R2	69 t
R3	44 t
M	185 tm

H=24-36 m	
R1	55 t
R2	55 t
R3	37 t
M	116 tm

H=0-23 m	
R1	45 t
R2	43 t
R3	39 t
M	101 tm

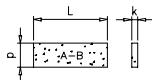


Peso zavorra - Ballast weight - Poids du lest - Ballastgewicht - Peso de lastre



3.8x3.8	H	n°	Tot.
	0-23 m	18 B	54000 kg
	24-36 m	20 B	60000 kg
	37-42 m	24 B	72000 kg

	A	B
L	3.6m	4.0m
k	0.3m	0.19m
d	1.15m	1.2m

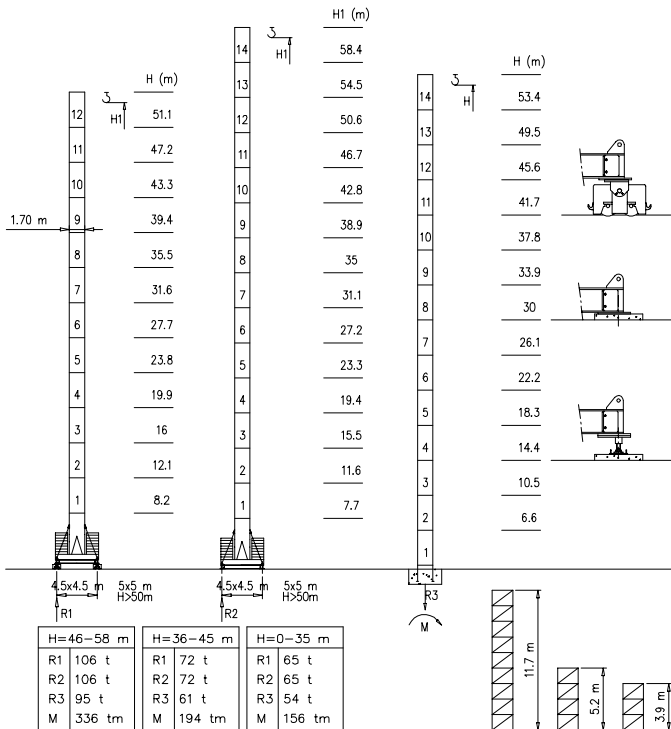


3.2x3.2	H	n°	Tot.
	0-27 m	18 A	54000 kg

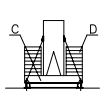
Torre/Reazioni - Masts/Reactions - Mat/Réactions - Maste/Eckdrücke - Mástil/Reacciones - Tramo/Reações

S1700

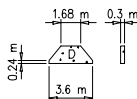
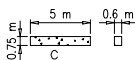
39.6 m → 50 m



Peso zavorra - Ballast weight - Poids du lest - Ballastgewicht - Peso de lastre



H	n*	Tot.
0-35 m	2C+ 18D	60800 kg
36-45 m	2C+ 22D	72000 kg
46-58 m	2C+ 32D	105000 kg



Curve di carico – Courbes de charges – Load diagrams – LastKurven – Curvas de cargas

Pmax 3000 kg

	14400 kg	52 m	2	22	24	26	28	30	32	34	36	38	40	42	44	46	48	52	m
			3000	3000	2790	2550	2350	2180	2020	1890	1770	1660	1570	1480	1400	1330	1260	1000	kg
	14400 kg	50 m	2	22	24	26	28	30	32	34	36	38	40	42	44	46	48	50	m
			3000	3000	2790	2550	2350	2180	2020	1890	1770	1660	1570	1480	1400	1330	1260	1200	kg
	14400 kg	48 m	2	2	26	28	30	32	34	36	38	40	42	44	46	48	m		
			3000	3000	2760	2560	2380	2230	2090	1960	1850	1750	1660	1580	1500	kg			
	14400 kg	45 m	2	2	26	28	30	32	34	36	38	40	42	44	45	m			
			3000	3000	2730	2530	2360	2200	2070	1940	1830	1730	1640	1600	kg				
	12000 kg	42 m	2	2	26	28	30	32	34	36	38	40	42	m					
			3000	3000	2830	2630	2450	2290	2190	2020	1900	1800	kg						
	9600 kg	39.6 m	2	2	27	28	30	32	34	36	38	39.6	m						
			3000	3000	3000	2890	2680	2500	2330	2190	2060	2000	kg						

Pmax 6000/3000 kg

	14400 kg	52 m	2	13	16	18	20	22	24	26	28	30	32	34	36	38	40	42	44	46	48	52	m
			6000	6000	4310	3810	3400	3000	2790	2550	2350	2180	2020	1890	1770	1660	1570	1480	1400	1330	1260	1000	kg
	14400 kg	50 m	2	13	16	18	20	22	24	26	28	30	32	34	36	38	40	42	44	46	48	50	m
			6000	6000	4310	3810	3400	3000	2790	2550	2350	2180	2020	1890	1770	1660	1570	1480	1400	1330	1260	1200	kg
	14400 kg	48 m	2	15	16	18	20	22	24	26	28	30	32	34	36	38	40	42	44	46	48	m	
			6000	6000	5300	4440	3970	3590	3260	2960	2760	2560	2380	2230	2090	1960	1850	1750	1660	1580	1500	kg	
	14400 kg	45 m	2	15	16	18	20	22	24	26	28	30	32	34	36	38	40	42	44	45	m		
			6000	6000	5200	4400	3930	3550	3230	3000	2730	2530	2360	2200	2070	1940	1830	1730	1640	1600	kg		
	12000 kg	42 m	2	15	16	18	20	22	24	26	28	30	32	34	36	38	40	42	m				
			6000	6000	5400	4550	4070	3680	3360	3000	2830	2630	2450	2290	2190	2020	1900	1800	kg				
	9600 kg	39.6 m	2	15	16	18	20	22	24	26	28	30	32	34	36	38	39.6	m					
			6000	6000	5300	4640	4150	3750	3420	3130	2890	2680	2500	2330	2190	2060	2000	kg					

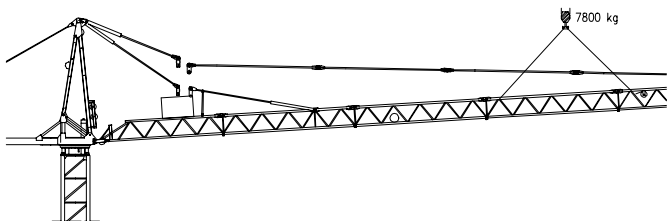
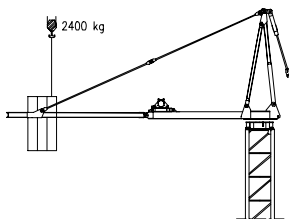
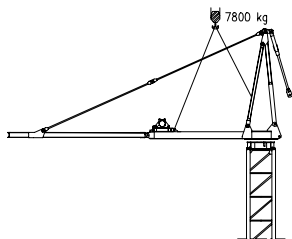
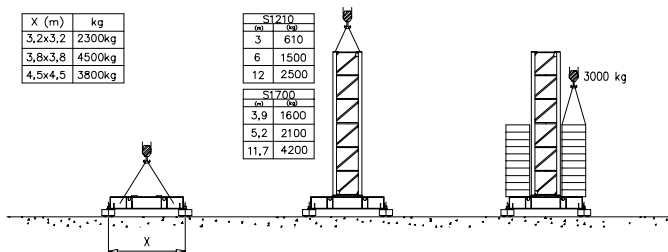
Pmax 6000 kg

	14400 kg	52 m	2	13	16	18	20	22	24	26	28	30	32	34	36	38	40	42	44	46	48	52	m
			6000	6000	4310	3810	3400	3000	2790	2550	2350	2180	2020	1890	1770	1660	1570	1480	1400	1330	1260	1000	kg
	14400 kg	50 m	2	13	16	18	20	22	24	26	28	30	32	34	36	38	40	42	44	46	48	50	m
			6000	6000	4310	3810	3400	3000	2790	2550	2350	2180	2020	1890	1770	1660	1570	1480	1400	1330	1260	1200	kg
	14400 kg	48 m	2	15	16	18	20	22	24	26	28	30	32	34	36	38	40	42	44	46	48	m	
			6000	6000	5300	4440	3970	3590	3260	2960	2760	2560	2380	2230	2090	1960	1850	1750	1660	1580	1500	kg	
	14400 kg	45 m	2	15	16	18	20	22	24	26	28	30	32	34	36	38	40	42	44	45	m		
			6000	6000	5200	4400	3930	3550	3230	3000	2730	2530	2360	2200	2070	1940	1830	1730	1640	1600	kg		
	12000 kg	42 m	2	15	16	18	20	22	24	26	28	30	32	34	36	38	40	42	m				
			6000	6000	5400	4550	4070	3680	3360	3000	2830	2630	2450	2290	2190	2020	1900	1800	kg				
	9600 kg	39.6 m	2	15	16	18	20	22	24	26	28	30	32	34	36	38	39.6	m					
			6000	6000	5300	4640	4150	3750	3420	3130	2890	2680	2500	2330	2190	2060	2000	kg					

X (m)	kg
3,2x3,2	2300kg
3,8x3,8	4500kg
4,5x4,5	3800kg

S1210	
tel.	kg
3	610
6	1500
12	2500

S1700	
tel.	kg
3,9	1600
5,2	2100
11,7	4200



Meccanismi – Mechanisms – Mécanismes – Antriebe – Mecanismos

Sollevamento S20.40 e V20.40 Hoisting Levage Heben Elevación Elevação		1a	4 m/min	3000 kg	14.7 kW	S20.40 32 kVA V20.40 28 kVA
		2a	20 m/min	3000 kg		
		3a	40 m/min	1500 kg		
		1a	2 m/min	6000 kg		
		2a	10 m/min	6000 kg		
		3a	20 m/min	3000 kg		
Sollevamento S2560 e V25.60 Hoisting Levage Heben Elevación Elevação		1a	7 m/min	3000 kg	18.5 kW	S25.60 38kVA V25.60 33 kVA
		2a	28 m/min	3000 kg		
		3a	56 m/min	1500 kg		
		1a	3.5 m/min	6000 kg		
		2a	14 m/min	6000 kg		
		3a	28 m/min	3000 kg		
Sollevamento V45.60 Hoisting Levage Heben Elevación Elevação		1a	2 m/min	6000 kg	33 kW	V45.60 50 kVA
		2a	20 m/min	6000 kg		
		3a	31 m/min	5000 kg		
		4a	46 m/min	3200 kg		
		5a	60 m/min	2500 kg		
Carrello Trrolleying Distribution Katzfahren Distribución Distribuição		1a	OP 5 m/min	6000 kg	3 kW	Potencia electrica necesaria Puissance électrique nécessaire Necessary electric power Anschlusswert
		2a	25 m/min	6000 kg		
		3a	50 m/min	3000 kg		
Rotazione Siewing Orientation Schwenken Orientación Rotação		1a	0 → 0.2	giri/min tr/min rp/min	4.4 kW @ 1200rpm n° 2 x 2.2 kW	
		2a	0 → 0.6			
		3a	0 → 0.9			
Traslazione Travelling Translation Kranfahren Traslación Translação		1a	OP 0 → 5		3.7 kW	
		2a	0 → 20			

Rete elettrica – Réseau – Mains supply – Netzstrom – Red – Rede electrica

400V – 50 Hz



FMgru s.r.l.

via Emilia 11-29010 Pontenure PC ITALY
tel. 0523/510446 ric.cau. fax 0523/510355
www.fmgru.com e-mail: info@fmgru.com

FEM 1.001

2000/14/CE



Documento commerciale non contrattuale
Par tutte le informazioni tecniche riferirsi
alle corrispondenti Istruzioni!

Unverbindliches Vertriebsdokument.
Für technische Informationen, siehe die
entsprechenden Anweisungen.

This commercial document is not legally
binding. For any technical information, please
refer to the corresponding instructions.

Documento comercial no contractual
Para cualquier información técnica,
ver la noticia correspondiente.

Code: 15CA37CBDA0
Ed. Data Rev. Data
1 05.04.03 05.08.01